



## The DG-1000 pressure gauge



The innovative pressure gauge DG-1000 convinces with its intuitive use, clear structure, and modern design. Its high-resolution touch screen and intelligent microprocessor provide you with the functions of a modern mini-computer. New requirements are constantly fed into the firmware and users can install and run the latest firmware updates free of charge at any time.

The measurement accuracy of 0.9% is well above the minimum legal requirements and provides reliable measurement results with maximum precision. The DG-1000 has various connections (USB, Ethernet, Bluetooth, WiFi). The BlowerDoor test is performed automatically, semi-automatically or, if required, manually. Optionally, the measuring system can be controlled via the app “TEC Gauge” for one-point measurement for quality assurance and via “TEC Auto Test” for multi-point measurement according to ISO 9972 on a tablet or smartphone.

### The most important features

- Maximum measuring accuracy of 0.9%
- Intelligent microprocessor
- WiFi, USB and Ethernet connection, Bluetooth
- High-resolution touch screen
- Free firmware updates
- 1-point test with the DG-1000 or the app TEC Gauge via smartphone or tablet
- Multi-point test with the TEC Auto Test app via smartphone or tablet
- Display of air change rate  $n_{50}$  and air permeability  $q_{50}/q_{E50}$
- With tubing assistant for easy measurement setup
- New: Logger function for long-term recording of data
- Compatible with all BlowerDoor components

### Scope of delivery

DG-1000 with calibration certificate. Incl. fan control cable, USB cable, charger, tubes and reference guide in English (other languages on request) as well as the software TECITE Express 5.1



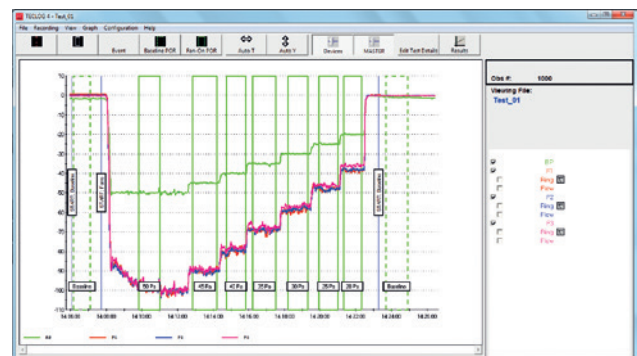
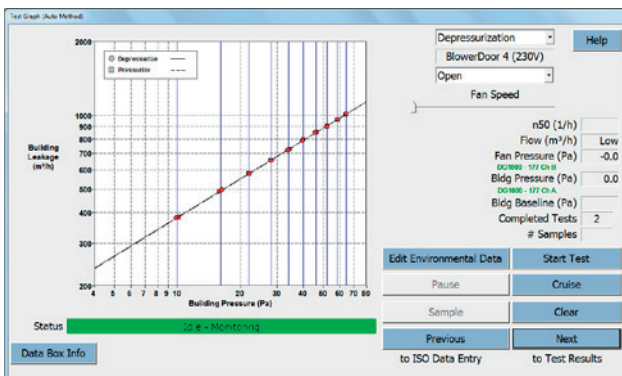
## Technical Data

### DG-1000 pressure gauge

**No. of independent pressure channels:** Two / **Pressure range:** - 2,500 to + 2,500 Pa  
**Display resolution:** 0.1 Pa for readings 0 to 999.9 Pa, 1 Pa for readings 1000 Pa and larger  
**Accuracy at typical use conditions\*:** ± 0.9% of pressure reading or ± 0.12 Pa (whichever is greater)  
**Units of measure:** Airflow @ 25, 50, 75 Pa: m<sup>3</sup>/h, l/s, cfm / **Air change rate:** 1/h / **Air permeability:** (m<sup>3</sup>/h)/m<sup>2</sup>  
**Auto-zero:** On start up and then once every 10 seconds  
**Time averaging:** 1, 5, 10 seconds and long-term (continuous update)  
**Operating temperature range:** 5.5 °C to 46 °C / **Storage temperature range:** -20 °C to 60 °C  
**Display:** 480 × 272 pixels, 95 × 53 mm, capacitive touch screen / **Display backlight:** User adjustable (default 40 %)  
**Power:** Two 18650 Lithium Ion batteries (replaceable) with AC charger included  
**Battery life:** Over 15 hours of continuous use with default settings, 13 hours of continuous use with default settings and wifi active  
**Auto-off:** Individually adjustable  
**Dimensions:** 107 × 177 × 36 mm (L × W × D) / **Weight:** approx. 445 g  
**Recommended calibration interval:** Two years

\*Typical conditions are a temperature range of 12 °C bis 32 °C and regular calibration

The accuracy of the BlowerDoor Standard, BlowerDoor MiniFan and BlowerDoor MultipleFan measurement systems meets the requirements of the following test standards: ISO 9972, EN 13829, FD P50-784, ASTM E779, ASTM E1554, CGSB, ATTMA TS1, NFPA, RESNET, US ACE, ISO 14520, EN 15004, VdS 2380 and 2381.



### Software TECTITE Express

Version 5.1 per download link and reference guide available in EN/DE/FR  
 Automated/semi-automated/manual BlowerDoor test according to ISO 9972 and EN 13829  
**System requirements:** WIN 7 or up

### Software TECLOG MultipleFan

Version TECLOG 4 per download link in English, reference guide available in EN/DE/FR  
 BlowerDoor measurement with multiple fans  
**System requirements:** WIN 7 or up

### Current apps for mobile devices

- TEC Gauge (one-point measurement)
  - TEC Auto Test (multi-point measurement)
- System requirements:** iOS or Android