

The DG-1000 pressure gauge



The innovative pressure gauge DG-1000 convinces with its intuitive use, clear structure, and modern design. Its high-resolution touch screen and intelligent microprocessor provide you with the functions of a modern mini-computer. New requirements are constantly fed into the firmware and users can install and run the latest firmware updates free of charge at any time.

The measurement accuracy of $\pm 0.9\%$ is well above the minimum legal requirements and provides reliable measurement results with maximum precision. The DG-1000 has various connections (USB, Ethernet, Bluetooth, WiFi). The BlowerDoor test is performed automatically, semi-automatically or, if required, manually. Optionally, the measuring system can be controlled via the app "TEC Gauge" for one-point measurement for quality assurance and via "TEC Auto Test" for multi-point measurement according to ISO 9972 on a tablet or smartphone.

The most important features

- Maximum measuring accuracy of $\pm 0.9\%$
- Intelligent microprocessor
- WiFi, USB and Ethernet connection, Bluetooth
- High-resolution touch screen
- Free firmware updates
- 1-point test with the DG-1000 or the app TEC Gauge via smartphone or tablet
- Multi-point test with the TEC Auto Test app via smartphone or tablet
- Multi-point test with the TEC Auto Test app via smartphone or tablet
- Display of air change rate n_{50} and air permeability q_{50}/q_{E50}
- With tubing assistant for easy measurement setup
- New: Logger function for long-term recording of data
- Compatible with all BlowerDoor components



Technical Data

DG-1000 pressure gauge

No. of independent pressure channels: Two / **Pressure range:** -2,500 to +2,500 Pa

Display resolution: 0.1 Pa for readings 0 to 999.9 Pa, 1 Pa for readings 1.000 Pa and larger

Accuracy at typical use conditions*: $\pm 0.9\%$ of pressure reading or ± 0.12 Pa (whichever is greater)

Units of measure: Airflow @ 25, 50, 75 Pa: m^3/h , l/s , cfm / **Air change rate:** $1/\text{h}$ / **Air permeability:** $(\text{m}^3/\text{h})/\text{m}^2$

Auto-zero: On start up and then once every 10 seconds

Time averaging: 1, 5, 10 seconds and long-term (continuous update)

Operating temperature range: $5.5\text{ }^\circ\text{C}$ to $46\text{ }^\circ\text{C}$ / **Storage temperature range:** $-20\text{ }^\circ\text{C}$ to $60\text{ }^\circ\text{C}$

Display: 480×272 pixels, 95×53 mm, capacitive touch screen / **Display backlight:** User adjustable (default 40 %)

Power: Two 18650 lithium ion batteries (replaceable) with AC charger included

Battery life: Over 15 hours of continuous use with default settings, 13 hours of continuous use with default settings and wifi active

Auto-off: Individually adjustable

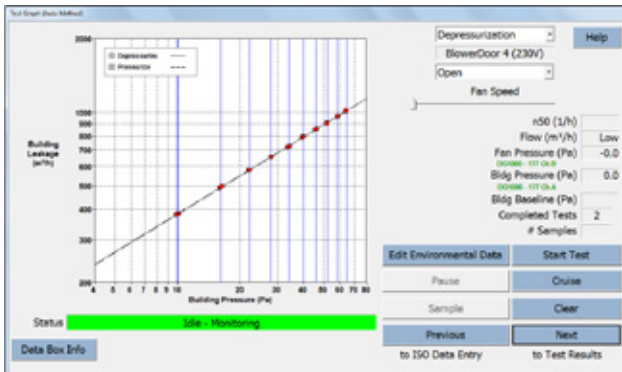
Dimensions: $107 \times 177 \times 36$ mm (L \times W \times D) / **Weight:** approx. 445 g

Recommended calibration interval: Two years

*Typical conditions are a temperature range of $12\text{ }^\circ\text{C}$ bis $32\text{ }^\circ\text{C}$ and regular calibration

Scope of delivery and prices: blowerdoor-unlimited.com

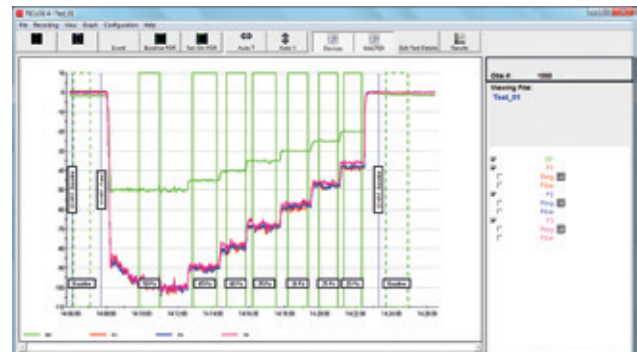
The accuracy of the BlowerDoor Standard, BlowerDoor MiniFan and BlowerDoor MultipleFan measurement systems meets the requirements of the following test standards: ISO 9972, EN 13829, FD P50-784, ASTM E779, ASTM E1554, CGSB, ATTMA TS1, NFPA, RESNET, US ACE, ISO 14520, EN 15004, VdS 2380 and 2381.



Software TECTITE Express

Version 5.1 per download link and reference guide available in EN/DE/FR
Automated/semi-automated/manual BlowerDoor test according to ISO 9972 and EN 13829

System requirements: WIN 7 or up



Software TECLOG MultipleFan

Version TECLOG 4 per download link in English, reference guide available in EN/DE/FR

BlowerDoor measurement with multiple fans

System requirements: WIN 7 or up

Current apps for mobile devices

- TEC Gauge (one-point measurement)
- TEC Auto Test (multi-point measurement)

System requirements: iOS or Android

BlowerDoor GmbH | MessSysteme für Luftdichtheit
Zum Energie- und Umweltzentrum 1 | D-31832 Springe-Eldagsen
Phone +49 5044 975-40 | info@blowerdoor.com | www.blowerdoor.com

